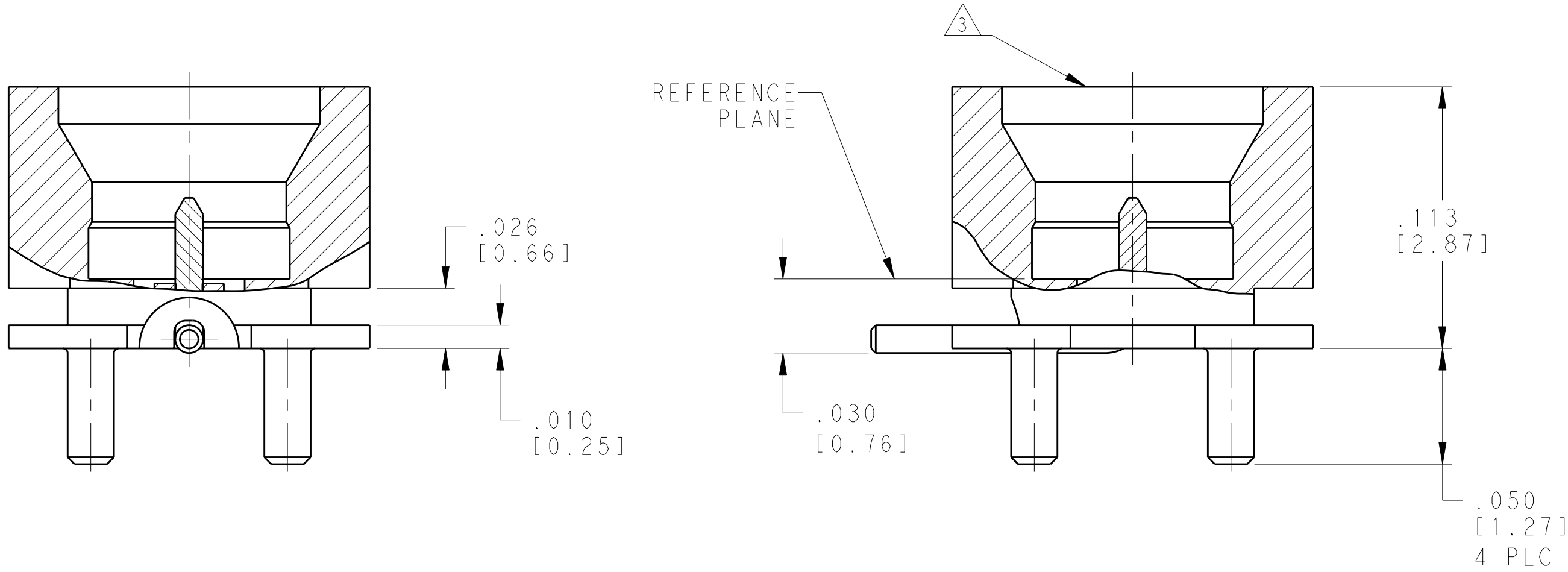
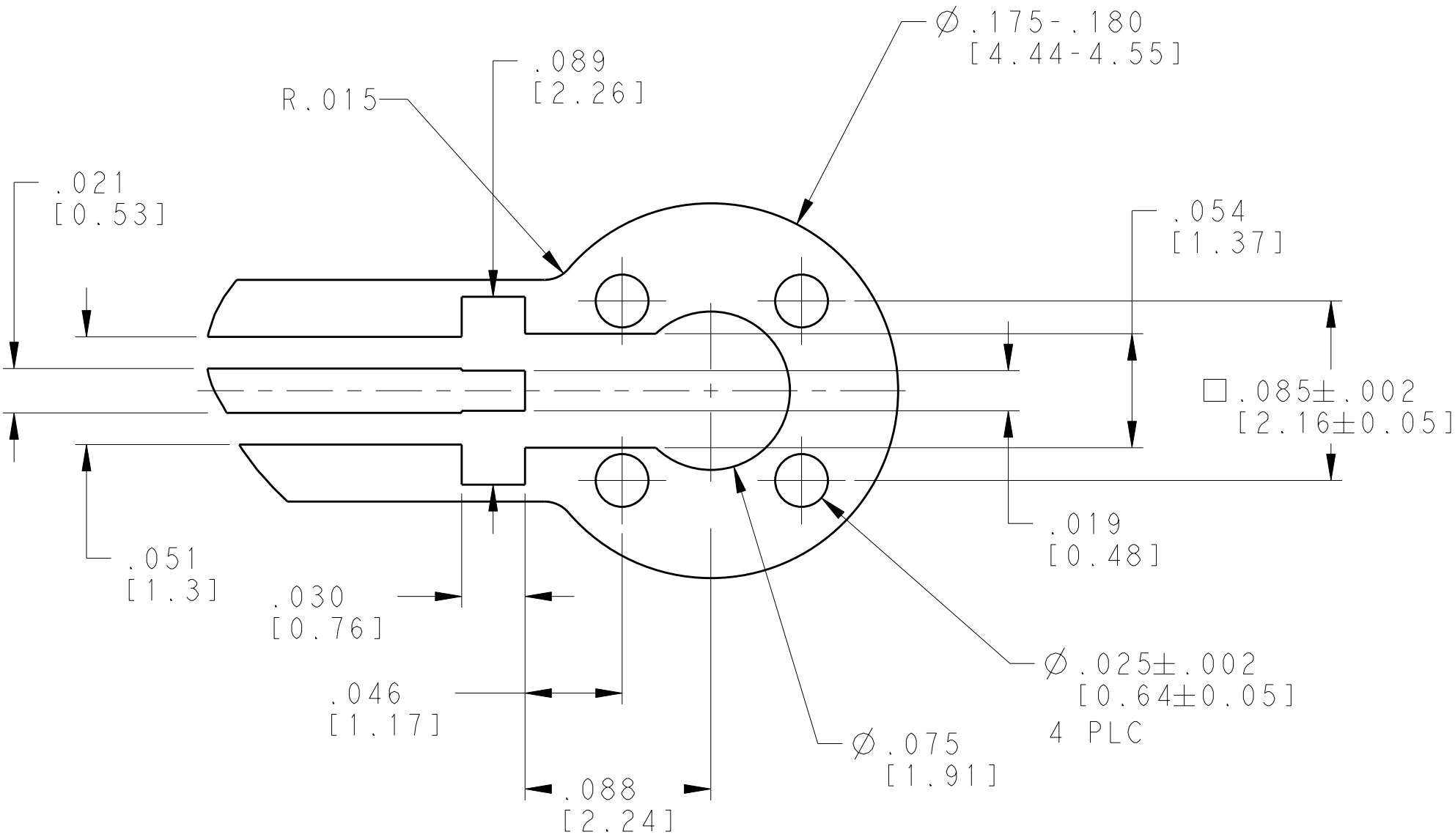
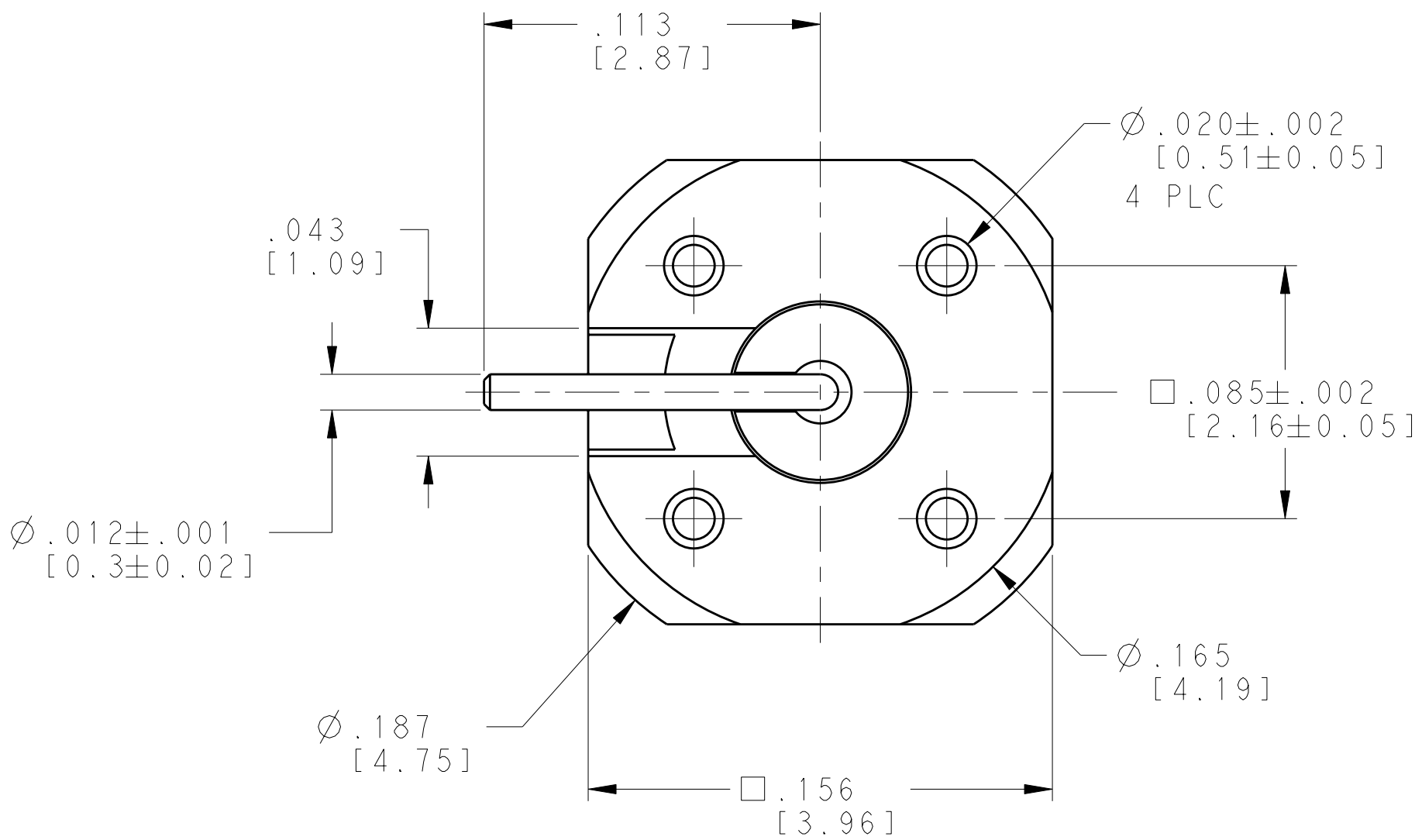


LOC		DIST		REVISONS			
P	LTR	DESCRIPTION		DATE	OWN	APVD	
	A	RELEASED PER ECO 12-005294		3-21-12	CT	BM	


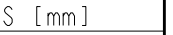


- 1 MATERIALS:
HOUSING: BRASS PER ASTM B16
CONTACT: BERYLLIUM COPPER PER ASTM B196
DIELECTRIC: POLYAMIDE-IMIDE (TORLON) PER MIL-P-46179
- 2 FINISHES:
HOUSING: GOLD PLATE PER ASTM B488, .000030 [0.0008]
MIN THICK OVER NICKEL PER QQ-N-290, .000050 [0.0013] MIN THICK
CONTACT: GOLD PLATE PER ASTM B488, .000030 [0.0008]
MIN THICK OVER NICKEL PER QQ-N-290, .000050 [0.0013] MIN THICK
- 3 SMPM MALE FULL DETENT INTERFACE PER MIL-STD-348A, FIGURE 328.2



RECOMMENDED PCB LAYOUT

1757639-1
PART
NUMBER

THIS DRAWING IS A CONTROLLED DOCUMENT.		OWN B. MOYER	15MAR2012	 TE Connectivity						
DIMENSIONS: INCHES [mm]		CHK C. THOMAS	3-21-12							
	TOLERANCES UNLESS OTHERWISE SPECIFIED:	APVD B. MOYER	15MAR2012	NAME						
		PRODUCT SPEC		SMPM, MALE FULL DETENT, PCB SURFACE MOUNT, WITH THRU HOLE POSTS						
		108-2242								
		APPLICATION SPEC								
MATERIAL		WEIGHT		SIZE	CAGE CODE	DRAWING NO	RESTRICTED TO			
1		.233 Gr		A1	00779	C=1757639	-			
FINISH		CUSTOMER DRAWING		SCALE	20:1	SHEET	1 OF 1	REV	A	
2										